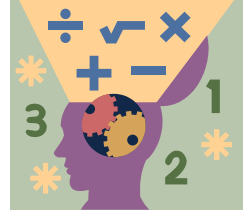


Math in English – for Street Scene



Sometimes, a formula works for seeing how dense your writing is. Let's try it.

Using the point scale, fill in the columns for yourself and then try it for another. Be CAREFUL to be sure you are using proper sentence structure first. See me if you struggle with this BEFORE calculating.

Elements	Pts	Times Self Calc.	Total pts Self	Pts	Times Peer Calc.	Pts	Total points Peer Calc.
Active Verbs	1			1		1	
Effective Adverbs	1			1		1	
Strong Adjective	1			1		1	
Effective Clause	1			1		1	
Simile/metaphor (Comparison)	2			2		2	
Personification	2			2		2	
Non Subject Sentence openers	2			2		2	
Total Points							
Number of sentences							
Final Value (Pts/#sentences) < 3 try again >4 very good >5 excellent.							

Reflection

1. What element did you learn that you feel **most improved** your writing? _____
2. Which element(s) are **you struggling the most** with?

- Why? _____
3. What is your **next step**? _____

Sometimes writing feels like this never ending staircase. Just when you improve, you see another staircase to climb. Lots of climbing but lots of fun.

